



Corrections

Certified Health Data Administrator (CHDA) Exam Preparation, 3rd edition

AHIMA Product # AC400723

Page 13, Practice Exam 1, Domain 2, Question 18, the correct answer (missing from the options) should be “DNFB cases met the benchmark 50 percent of the time.”

Page 26, Practice Exam 1, Domain 4, Question 32, the correct answer (missing from the options) should be “3.08.”

Rationale: To calculate the case mix index from the volume of cases from MS-DRG calculate the weighted average MS-DRG weight. Calculations as follows:

Step 1 – multiply each MS-DRG weight times the volume:

$$3.9994 \times 100 = 399.94$$

$$2.2838 \times 52 = 118.7576$$

$$1.698 \times 36 = 61.128$$

Step 2 – add up the components in Step 1:

$$399.94 + 118.7576 + 61.128 = 579.8256$$

Step 3 – sum the volumes for the MS-DRGs

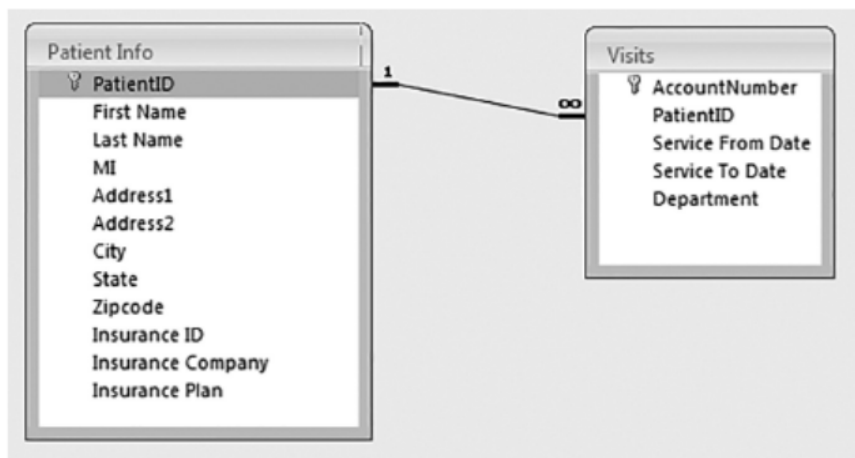
$$100 + 52 + 36 = 188$$

Step 4 – Divide Step 2 by Step 3

$$579.8256/188 = 3.084178$$

$$= 3.0842$$

Page 77, Practice Exam 3, Domain 3, question 25. The following diagram should be included:



Page 95 of the answer key:

#23.

The answer is correct, b.

The rationale should be: Logical Observation Identifiers Names and Codes (LOINC) is the exchange standard for laboratory results; a clinical terminology that provides a common language for clinical and laboratory observations (Oachs and Watters 2020, 1037).

Page 78, Exam 3, Domain 4, question 4 contains a typo, corrected and highlighted below.

4. When should risk adjustment be applied to outcomes variables?

- a. If the raw score does not meet the stated goal
- b. If the volume of patients is different at each facility
- c. If the mix of patients treated by benchmark facilities **is** different
- d. If two facilities have different characteristics